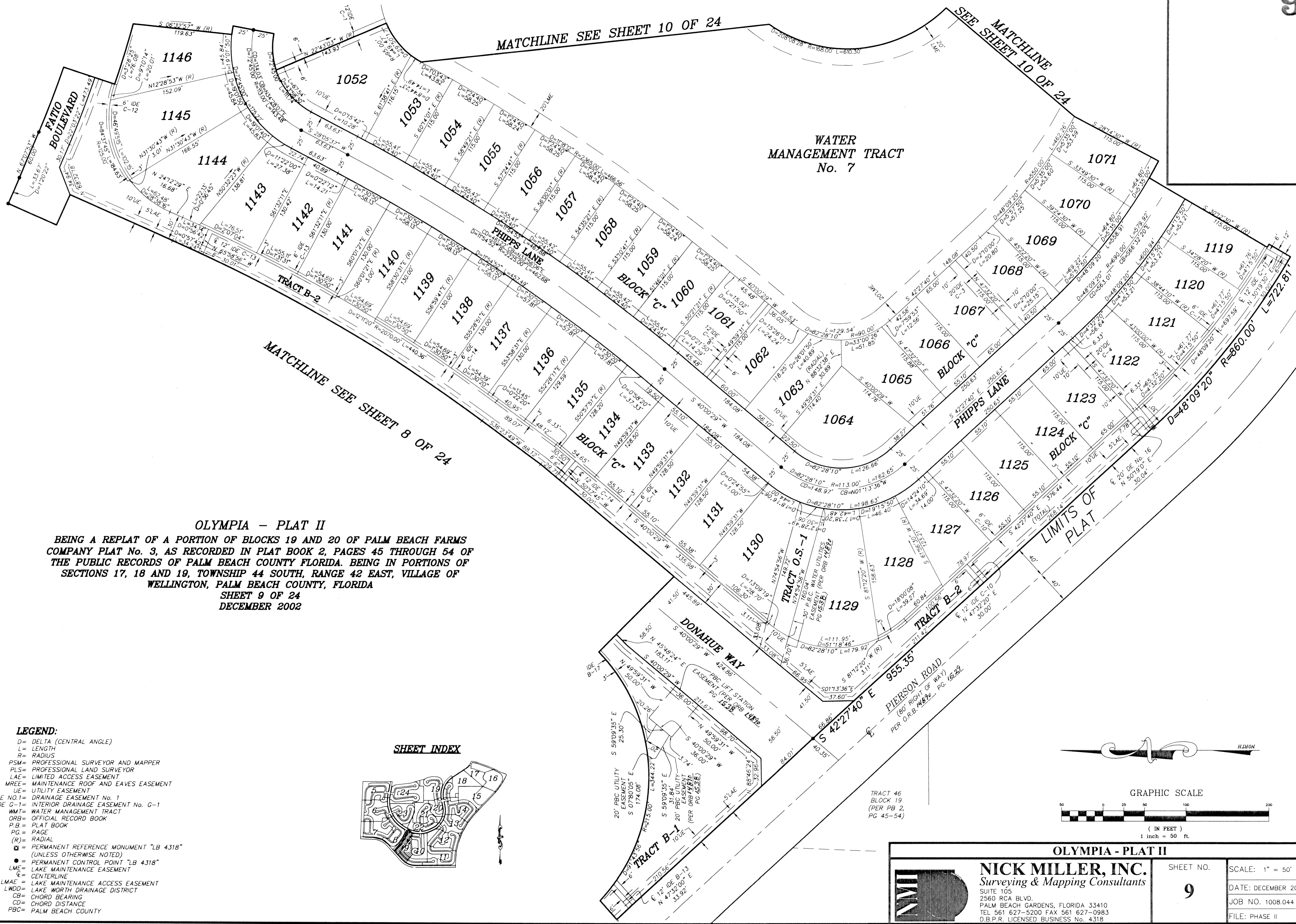


MATCHLINE SEE SHEET 10 OF 24

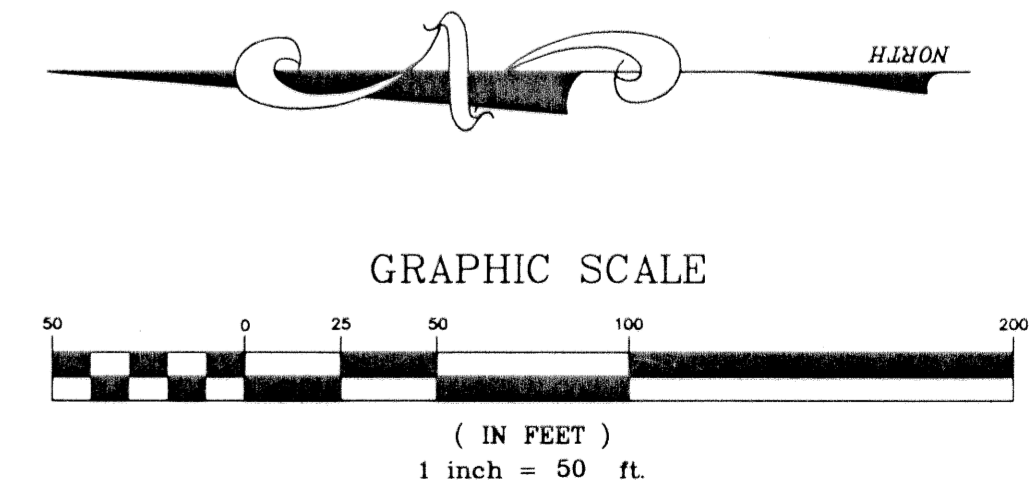
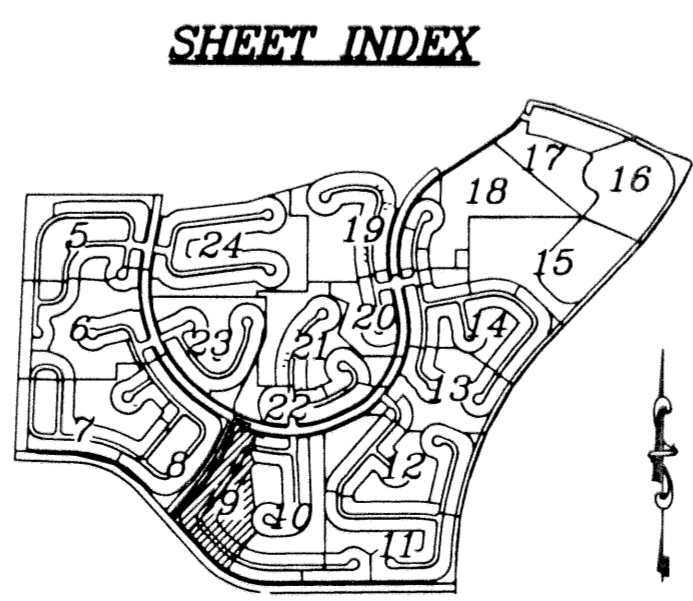
SEE MATCHLINE SHEET 10 OF 24

WATER MANAGEMENT TRACT No. 7



OLYMPIA - PLAT II BEING A REPLAT OF A PORTION OF BLOCKS 19 AND 20 OF PALM BEACH FARMS COMPANY PLAT No. 3, AS RECORDED IN PLAT BOOK 2, PAGES 45 THROUGH 54 OF THE PUBLIC RECORDS OF PALM BEACH COUNTY FLORIDA. BEING IN PORTIONS OF SECTIONS 17, 18 AND 19, TOWNSHIP 44 SOUTH, RANGE 42 EAST, VILLAGE OF WELLINGTON, PALM BEACH COUNTY, FLORIDA SHEET 9 OF 24 DECEMBER 2002

- LEGEND: D= DELTA (CENTRAL ANGLE) L= LENGTH R= RADIUS PSM= PROFESSIONAL SURVEYOR AND MAPPER PLS= PROFESSIONAL LAND SURVEYOR LAE= LIMITED ACCESS EASEMENT MREE= MAINTENANCE ROOF AND EAVES EASEMENT UE= UTILITY EASEMENT DE NO.1= DRAINAGE EASEMENT No. 1 IDE G-1= INTERIOR DRAINAGE EASEMENT No. G-1 WMT= WATER MANAGEMENT TRACT ORB= OFFICIAL RECORD BOOK P.B.= PLAT BOOK PC.= PAGE (R)= RADIAL □ = PERMANENT REFERENCE MONUMENT "LB 4318" (UNLESS OTHERWISE NOTED) ● = PERMANENT CONTROL POINT "LB 4318" LME= LAKE MAINTENANCE EASEMENT C= CENTERLINE LMAE= LAKE MAINTENANCE ACCESS EASEMENT LWDD= LAKE WORTH DRAINAGE DISTRICT CB= CHORD BEARING CD= CHORD DISTANCE PBC= PALM BEACH COUNTY



OLYMPIA - PLAT II SHEET NO. 9 SCALE: 1" = 50' DATE: DECEMBER 2002 JOB NO. 1008.044 FILE: PHASE II NICK MILLER, INC. Surveying & Mapping Consultants SUITE 105 2560 RCA BLVD. PALM BEACH GARDENS, FLORIDA 33410 TEL: 561 627-5200 FAX 561 627-0983 D.B.P.R. LICENSED BUSINESS No. 4318